

G3 Series

Advanced HMI Panels

Increase productivity

Improve operations

Reduce engineering time

Enhance data management



- Touchscreen & keypad operator interface panels from 3.2" to 15"
- Monochrome & color models
- Sunlight-readable options
- Converts over 200 protocols
- Built-in web & FTP server
- On-board data logging
- Multiple serial, Ethernet & USB ports
- Optional CANopen, DeviceNet, Profibus DP & GSM/GPRS expansion cards
- Remote monitoring and control
- Software and support included

G3 operator interface panels give you complete HMI functionality for MicroMod controllers, PLCs, motor drives and other communications-capable devices. With Ethernet as standard on all G3 models, you can network-enable any serial devices connected to the panel.

A time-saving library of over 5000 symbols in 60 categories lets you quickly create detailed graphics that would take hours or days with other brands. Create realistic depictions of your equipment through the use of animation: any object in the library, as well as imported JPEGs, bitmaps and WMF files, can be animated. And, you can remove objects from the user interface when they're not relevant to a particular operation. This allows the operators to remain focused only on the items that require the most attention.

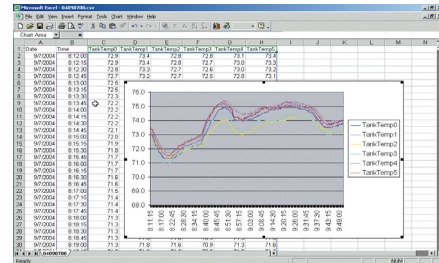
G3 operator panels come already loaded with over 200 drivers, including MicroMod's Extended Modbus protocol for MOD 30ML, MODCELL, SteamPAK & RetroPAK, and DataLink protocol for WaterPAK and Micro-DCI controllers including 53MC5000, 53SL6000 MicroMite, and legacy products

Convert & Communicate

- Convert over 200 major industrial protocols
- Drag-and-drop data mapping between protocols
- Simultaneous communication with a minimum of 13 different protocols (expandable)
- One RS-422/485 port and two RS-232 ports standard
- Dual Ethernet port provides communications separately to the factory floor and enterprise

Collect

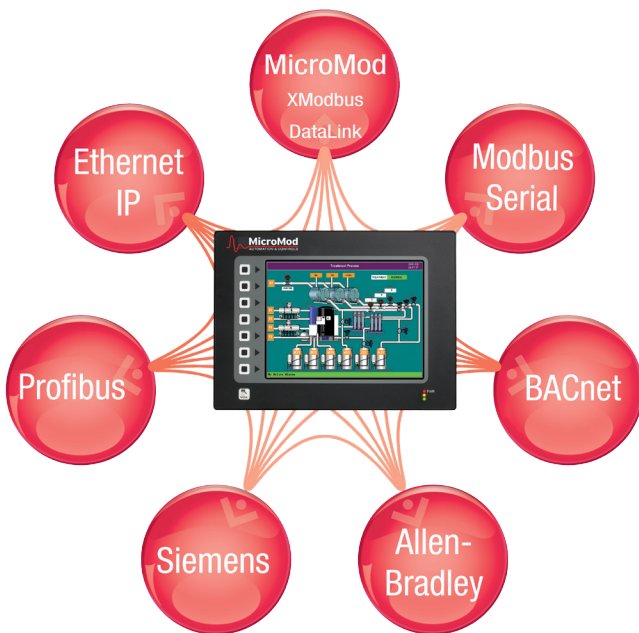
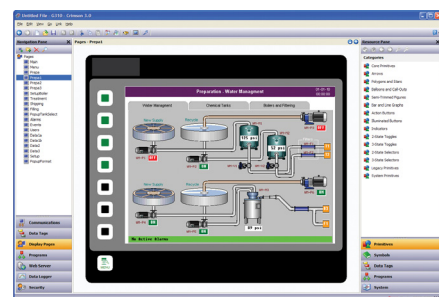
- Acquire & log data from any or all connected devices into a single file
- Data stored in open CSV Excel compatible file format



- Email or FTP logged files
- Log tags at user-programmable rates with automatic time/date stamp
- Download, upload and remotely access recipes, data and configuration files from the CF card or a USB drive; load database/configuration updates without a PC
- Automatically synchronize logged data between the G3 and remote FTP site
- Create customized data screens accessible by password to privately provide selected data for users

Configure

- Software, support, drivers & updates *included at no extra charge*
- Multi-lingual capability with support for thousands of characters
- Complete library of over 5,000 industrial graphics
- Built-in emulator for testing
- Full-featured C-type syntax programming



Connect

- Web and network-enable any connected device
- Securely monitor, access or control all system functions
- Auto-upload data to FTP, web pages, dashboards
- Display panel, tags only, or custom pages
- Upload/download databases, recipes or log files
- Email or text message alarm and event notifications
- Pass through programming to other devices



Modbus® is a registered trademark of Schneider Electric licensed to the Modbus Organization, Inc.